

# UNFOLDING GREATER OPPORTUNITIES



2019  
JUNE  
CSR Report



# MESSAGE FROM THE PRESIDENT

In 2018, we met with success and achieved new milestones as we were able to put up two (2) new renewable energy (RE) power facilities. These consequently provided us additional resources to grow our business and to further extend help to our host communities through our Corporate Social Responsibility (CSR) Program – We Power H.E.L.P.

For Health projects, we continue to improve access to health services through our annual medical missions and provision of service ambulance and nutritional supplements to beneficiaries in Aklan, Batangas, and Tarlac. We also started to encourage the Barangays to implement disaster risk preparedness measures in their communities to mitigate possible effects of natural disasters.

In our Education projects, we have seven (7) new scholars from Batangas and Aklan. Five (5) of them are now in Senior High School in Malayan Colleges Laguna (MCL), and two (2) have graduated from their Culinary Certificate Program. The scholarship grants include full tuition fee, board, and lodging allowances. We hope that through formal education, they will have better career opportunities and more chances to grow professionally.

Our Adopt-a-School project has evolved from school building repairs to provision of learning materials and school equipment and supplies. We are happy and proud that our Sing, Spell, Read, and Write (SSRW) initiative for gradeschool children from Lourdes and Bantog Elementary Schools in Tarlac, has significantly reduced the non-readers from 95% to just 5% after a year of implementation. Also, another Teachers' Training Program focused on 21st century teaching and compliance with Philippine professional standards was attended by public school teachers in Tarlac in May, 2018. As a result, our Adopt-a-School effort in Tarlac was awarded a Certificate of Recognition by the Department of Education (DepEd) on December 7, 2018.

On livelihood, we continue to provide financial aid and technical training support to local groups who are into backyard businesses such as quail egg production, chili farming, and mat / bag weaving using local materials. We hope that by giving additional sources of income, they become more productive members of their communities and the society.

We would like to thank our staff, especially the CSR teams of PetroEnergy Resources Corporation (PERC), PetroGreen Energy Corporation (PGEC), Maibarara Geothermal Inc. (MGI), PetroWind Energy Inc. (PWEI), and PetroSolar Corporation (PSC), for all their effort and genuine commitment to our CSR Programs.

As we bring our company into new and exciting business prospects, we are also enthusiastic to explore and present greater opportunities for our CSR beneficiaries. We will continue to focus more on sustainable CSR efforts to increase social value and ensure that we are able to manage our impact to community and the environment.



Milagros V. Reyes  
President

## CONTENTS

- I. MESSAGE FROM THE PRESIDENT
- II. HEALTH
- III. EDUCATION
- IV. LIVELIHOOD
- V. ENVIRONMENT
- VI. SPECIAL PROJECTS
- VII. AWARDS AND RECOGNITION



The paper used in this CSR Report is certified by Programme for the Endorsement of Forest Certification (PEFC) signifying that the forest-based materials used in the paper came from sustainably-managed forests. Our printer, Primex Printers, Inc., also utilizes Kodak Sonora process-free plates, soy-based ink, and a Heidelberg carbon neutral offset press resulting in lesser chemical wastes and air contaminants during the printing process.

These show how PERC gives high importance to environmental preservation and to its sustainability journey.

Produced by: Corporate Communication Unit

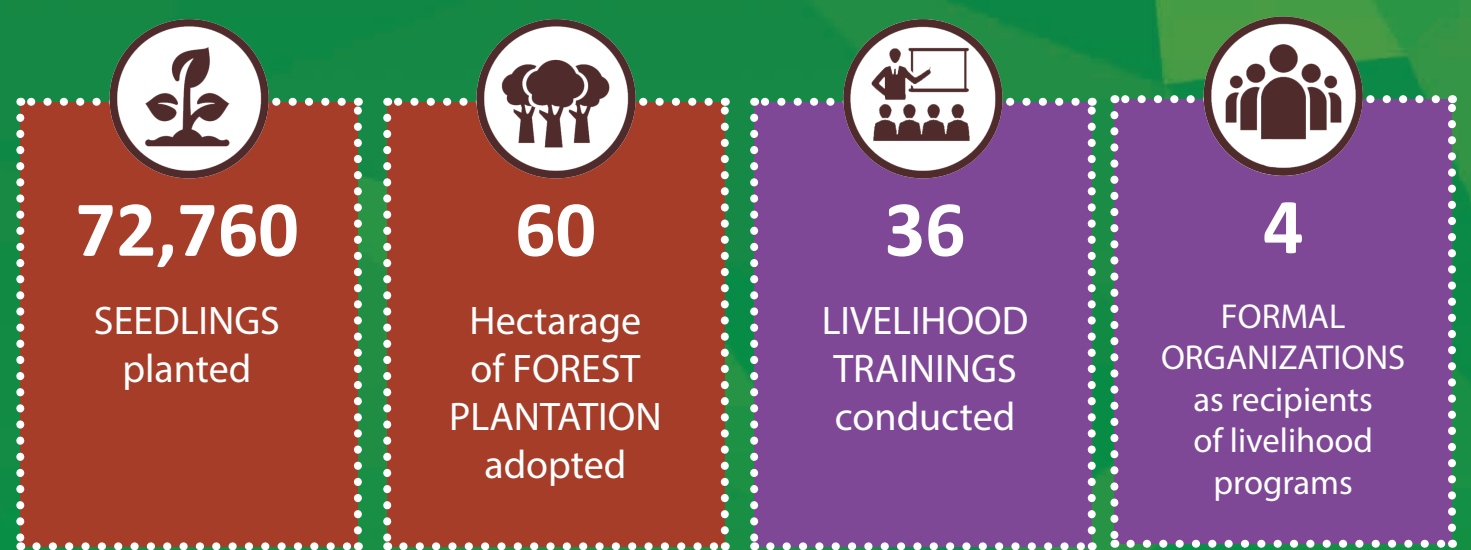
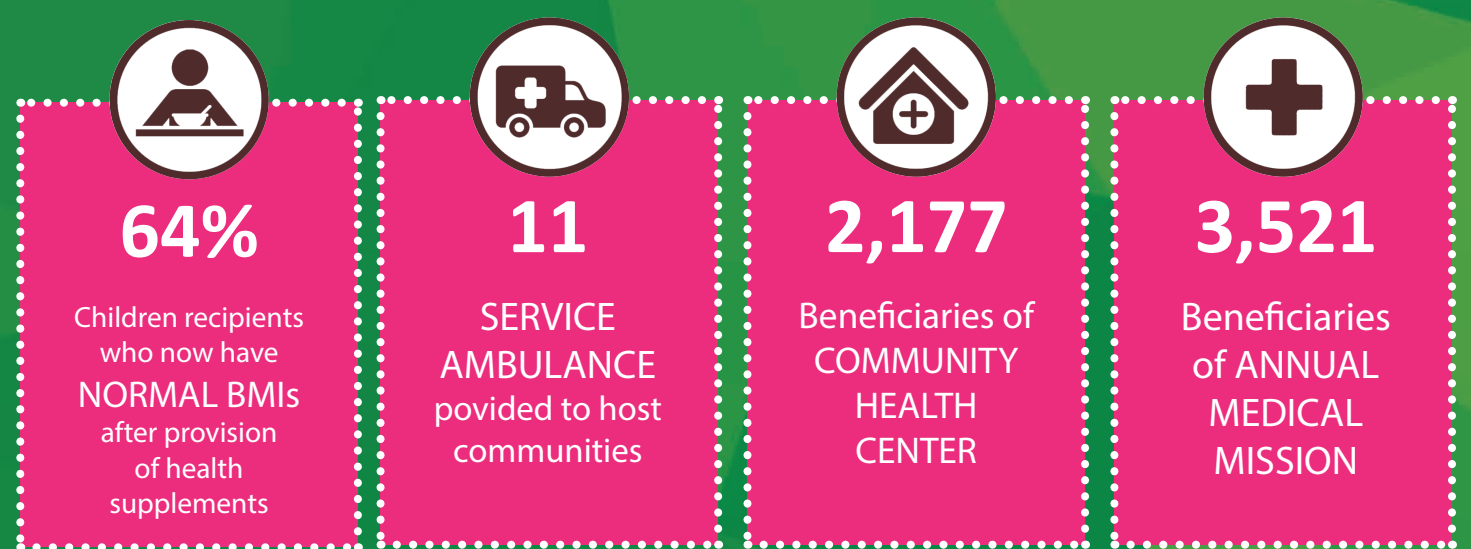
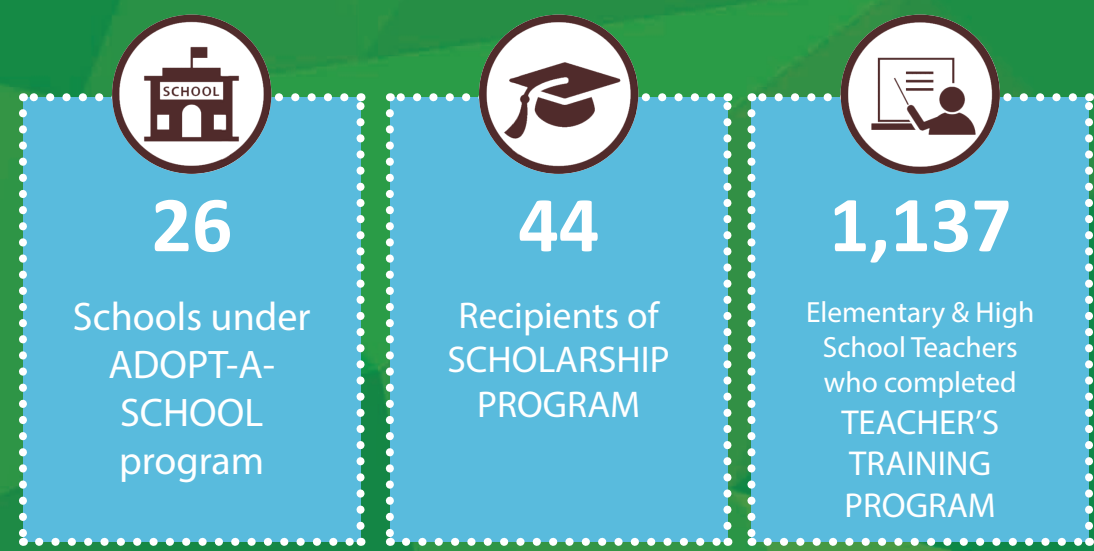
# WE POWER HELP

Health, Education, Livelihood Programs



# BY THE NUMBERS

(AS OF JUNE 2019)



Our HEALTH projects aim in ensuring that residents of our host communities have access to basic medical services and proper nutrition.

HEALTH





To ensure that our Health projects are sustained, we cultivate long-term partnerships with local medical service providers and local government units for our annual medical missions and provision of service ambulance and nutritional supplements to our host communities.

## ANNUAL MEDICAL MISSION



Total number of residents of Barangays San Rafael, Sto. Tomas, Batangas and Puting Lupa, Calamba City benefited from MGI's medical mission.



Total number of children who were given free circumcision last April 12-13, 2019 through MGI's "Libreng Tuli"



## BLOOD LETTING DRIVE

On August 29, 2018, another blood donation drive was held in Sitio Capuz, San Rafael, Sto. Tomas, Batangas in partnership with the Philippine Red Cross- Batangas Chapter. The event was participated by employees and contractors of MGI and members of Bitin Cooperative from Batangas.



Total number of personnel who joined the voluntary blood donation



# NUTRITIONAL SUPPLEMENTS

PWEI provides vitamins to 19 malnourished children, aged 2 – 5 years old in Brgy. Napaan, Aklan. After a year, 12 out of 19 children achieved normal BMIs. PWEI will continue to monitor improvements in nutrition and will work closely with Barangay Health Workers to sustain the project.



Total number of vitamins given to malnourished children of Barangays Napaan and Pawa in Aklan

# SERVICE AMBULANCE

In 2018, MGI, PWEI, and PSC provided additional service ambulance to their host communities. This helps local government units respond faster to medical emergencies in their communities.



Total number of additional service ambulance recently given to host communities

### Host Barangay Recipients:

Batangas (November 2018)  
Sitio Capus of San Rafael,

Tarlac (April 6, 2018)  
Barangay Mapalacsiao  
Barangay Motrico  
Barangay Pando  
Barangay Central  
Barangay Parang  
Barangay Mabilog

Aklan (April 10, 2019)  
Barangay Napaan



Our EDUCATION projects cover three objectives: engage the community through information, educate them through formal programs, and enable them by providing proper learning materials and facilities.

EDUCATION





# ADOPT-A-SCHOOL PROJECT

Our Adopt-a-School project is focused on three (3) main components - improvement of school facilities, provision of learning materials, and participation in school events and activities. All these are aimed at giving teachers and students the appropriate tools and conducive environment for effective teaching and learning.

## IMPROVEMENT OF SCHOOL FACILITIES

In Tarlac, 14 schools were the beneficiaries of Adopt-a-School project: Lourdes Elementary School, Balete Elementary School, Asturias Elementary School, Bantog Elementary School, Cut Cut II Elementary School, DPCH Elementary School, Parang Elementary School, Pando Elementary School, CAT High Main, CAT Elementary School, CAT High Annex, Motrico Elementary School, and Mapalacsiao Elementary School.

The support given to these schools ranges from repainting and refurbishing of school buildings to rehabilitation of comfort room and classrooms.



Total number of classrooms in Puting Lupa Elementary School in Batangas that were improved through setting of tiles and other repairs



Total number of schools included in Adopt-a-School project of PSC in Tarlac.



In addition to classroom repairs, MGI also installed garbage bins in San Rafael National High School and Puting Lupa Elementary School. The garbage bins were fabricated by MGI using scrap materials and used-oil containers. This recycling initiative is part of MGI's Solid Waste Management Program.







## PROVISION OF LEARNING MATERIALS



Total number of students who received school supplies from PWEI

Last June 19, 2018, PWEI provided school supplies to the children of its adopted schools - Rizal Elementary School, Unidos Elementary School, Napaan Elementary School, and Pawa Primary School. The school supplies include papers, writing materials, and supplementary educational books.

Additional two (2) units of smart TVs and printer were also given to students of Pawa Primary school last June 27, 2018, to enhance the teachers' teaching methodology.



## SCHOLARSHIP PROGRAM

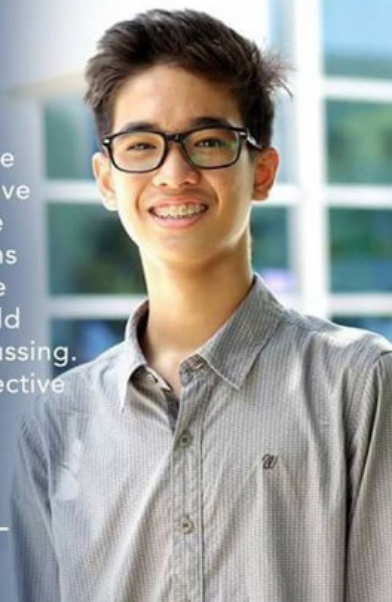


Additional scholars of PSC, MGI, and PWEI in 2018



"The mentors here at MCL are experts in their field. They have adapted their teaching to the K-12 system. Class discussions are fun and interactive, unlike before that the teachers would be the ones talking and discussing. Their teaching delivery is effective and they really uphold the institution's outcomes-based approach in learning."

William Howard Delos Reyes  
STEM Student, MCL-SHS



In 2018, five (5) scholarships were awarded to deserving students from San Rafael, Sto. Tomas, Batangas and Puting Lupa, Calamba City. The Scholars are now in Malayan Colleges Laguna (MCL) as senior high schools, in preparation for engineering courses.

## PARTICIPATION IN SCHOOL EVENTS & ACTIVITIES

MGI actively participates in Brigada Eskwela of Puting Lupa and San Rafael Elementary Schools, in preparation for the opening of 2018-2019 classes.

Activities include painting of school desks & fence, classroom and backyard cleaning and beautification.



The 3rd Batch of PWEI scholars graduated last December 2018 from the Culinary Arts Program in Malayan College Laguna (MCL). The 4th batch of scholars, from Brgy. Unidos and Brgy. Pawa, graduated last April 5, 2019 from Culinary Arts and Food Services at Verde Grande College Inc. in Kalibo, Aklan.



# TEACHERS' TRAINING PROGRAM



Total number of teachers from Balete Elementary School, Lourdes Elementary School, Bantog Elementary School, and CAT High School Main, who participated in this year's teachers' training

PSC conducted the 4th leg of Teachers Training Program for Tarlac teachers. The training installment focused on competency development, assessment for learning, and developing a Strategic Intervention Program (SIP) for students

The training was held on April 24-26, 2019 at La Maja Rica Hotel, Tarlac City, in coordination with DepEd Tarlac and Malayan Colleges Laguna (MCL)..



Our LIVELIHOOD PROGRAMS are anchored on sustainability and resilience. We employ a systematic approach consisting of regular community consultations, active participation of community members, and adequate social preparation.





## QUAIL EGG PRODUCTION & DISHWASHING LIQUID MAKING

Two (2) local groups from San Rafael, Sto. Tomas, Batangas have been given livelihood assistance by MGI.

The Sitio Capuz Community Development Association based in Sitio Capuz started their Quail Egg Production last May 2018 while the San Rafael Women's League (SaRaWLe) continued with their Dishwashing Liquid Making.



Number of local group beneficiaries of livelihood assistance in Batangas



Trainings to enhance the implementation of their quail egg production were conducted by the local government unit.

A team-building session was also conducted for SaRaWLe members by DSWD-Batangas last December 17, 2018.



# COLORED BURI AND BAG WEAVING

PWEI conducted a two-day skills training and upgrading session on Bariw/banig weaving last September 14-15, 2018 for the members of Pawa Agri-Ecotourism Livelihood Development Association (PAELDA). The training was conducted by members of Sto. Rosario Multi-Purpose Cooperative from Pandan Antique.

This training program aims to develop their skills in making and promoting local handicrafts using indigenous materials such as Bariw.



Number of participants from PAELDA who attended the training program.



Participants were trained on how to prepare Buri for weaving. The participants were walked through from bleaching to drying, dyeing, twinning, braiding, and the actual bag weaving. The participants were able to produce bags and placemats of different sizes and designs.

With new learnings acquired, PAELDA started producing bags, coin purse and woven banig (mats) from Bariw and Buri. These products are marketed in Kalibo, which enable the women banig makers to generate income for their families. In addition, PAELDA also profits from their miniature windmill and souvenir-making.



**1**  
Gathering of Bariw leaves are done manually by hand or by using wooden sticks.

**2**  
Gathered leaves are stripped of thorns to make it safer and easier for the weavers to use it for weaving. Each leaf is folded into two and stripped of thorns on both ends.

**3**  
The leaves are then sorted out according to length. The sizes are determined based on the size of the mats to be woven.

**4**  
After sorting, the leaves are bundled and tied together to ensure they will not curl. They are grouped into 10-20 leaves each bundle.

**5**  
To achieve shiny brown color, the bundled leaves are then sun-dried. Thus, weavers prefer to prepare the materials during summer and weave the mats/bag during rainy season.

**6**  
The leaves are continued to be air-dried to ensure that the leaf fiber will be strong enough not to break during weaving.

**7**  
However, the leaves also need to be soft enough and pliable to make weaving easier and faster. To do this, leaves are pounded using a wooden mallet.

**8**  
Once the correct softness is achieved, the leaves are stripped into 3-4 smaller strands using a splicer made from wood and blade.

**9**  
Prior to actual weaving, the strands are inspected for the last time to check on any defects or deformity.

**10**  
The processed leaves are woven into mats, bags, placemats, & other crafts and can be mixed with colored Buri to produce different patterns and designs.

# BARIW MAT WEAVING PROCESS

Bariw leaves are scientifically known as *Pandanus copelandii* and a versatile material for weaving. It is a relative of pandan leaves and is endemic in the provinces of Antique and Aklan.

Our approach to livelihood programs has always been utilizing the available resources, both natural materials and skills in the community and transforming into more valuable and income-generating outputs.

In Aklan, one of our host communities has practiced, for the longest time, the art of weaving using locally-available plant called Bariw. These women weavers of Brgy. Pawa have mastered the speed and creativity of weaving, which are passed on for generations. A single mat takes about 1-2 weeks for preparation of materials and 2-3 days to finish the actual weaving. One (1) standard-sized mat can be sold for PhP 150-200.

To help them, we conduct trainings on design and marketing. These will hopefully provide the support that they need to ensure that the unique art of weaving remains embedded in their culture and beneficial to their community.

# CHILI PRODUCTION

The chili production livelihood project in Tarlac is now on its 2nd year. From the original 12 farmers, 12 additional farmers joined the group of beneficiaries this year. The project is implemented in coordination with Department of Agrarian Reform (DAR)-Tarlac and Association of Barangay Captains (ABC) of Hacienda Luisita. An average of 1,000 kilos of chili is harvested every week by the farmers.



Total number of farmer beneficiaries



# ENVIRONMENTAL PROGRAMS







# ANNUAL TREE PLANTING

In Tarlac, PSC continuously maintains the 5.0-hectare plantation which was adopted in 2018. A total of 100 Narra seedlings were planted in partnership with the Upland Aeta Community of Brgy. Anupul, Bamban, Tarlac. PSC also turned over 1,500 narra seedlings to City Environment and Natural Resources Office (CENRO) Capas, Tarlac in support of the National Greening Project of the Department of Environment and Natural Resources (DENR).

In Aklan, PWEI conducts the Dagyaw para sa Kaguaengan – Annual Tree Planting last June 22, 2018. About 150 Chinese Acacia seedlings, 20 Agoho seedlings, and 30 Badlan seedlings were planted within the site, as part of PWEI's continuous environmental rehabilitation.

The tree planting was successfully participated by PWEI staff, Philippine Army personnel assigned on site, security guards & officers, and other contractors on site.



Additional number of trees planted in MGI, PWEI, and PSC

In Batangas, Caballero seedlings were planted in the open areas inside the project site not only to establish green buffer zones but also to help abate heat and beautify the surroundings.



## 'BANTAY-LANGIS' PROJECT

PetroWind Energy Inc. (PWEI) forged a Memorandum of Agreement (MOA) with ABS-CBN, and Genetron International Marketing, for the disposal of used oil generated from the maintenance of the windfarm. The MOA which was signed last June 5, 2018 is under the "Bantay Langis" project of ABS-CBN. Proceeds coming from sale of used oil will be donated to ABS-CBN for the benefit of their Lingkod Kapamilya and Bantay Kalikasan Programs.



## SOLAR SHARING INITIATIVE

The Solar Sharing initiative of PetroSolar is now on its 3rd year. Bougainvillea plants were planted and lined up in the main roads of the solar plant and endemic fruit trees species were grown within the project site. This initiative aims to show that renewable energy facilities can also be a site for greening and tree-planting..



## ANNUAL COASTAL CLEAN UP

Every year, PWEI joins the Ocean Conservancy Annual Coastal Clean-up Celebration. With the theme "Fighting for Trash Free Seas", PWEI conducted a brief lecture on reducing plastics and on how to mitigate pollution in marine waters, for the employees and community members.



# SPECIAL PROJECTS

## EDUCATIONAL FIELD VISITS

As part of efforts to promote renewable energy development, PSC, PWEI and MGI host numerous site visits in their respective power plants by students and engineering professionals who would like to know more about RE technology, facilities, and operations.



## ER 1-94 ORIENTATION FOR HOST COMMUNITIES

The Department of Energy (DOE) Energy Regulation No. 1-94 (ER 1-94) requires energy generation companies to allot one-centavo per kilowatt-hour (Php0.01/kWh) of their electricity sales to host communities and remit the respective shares of this fund to host barangays, municipalities, cities, provinces, and electric cooperatives. Originally, ER 1-94 recipients have to get the funds from the DOE. In DOE's new guidelines, the funds will now be released directly to the recipients' trust accounts, making it easier for them to implement their projects.

To help the communities understand these guidelines, PGEC conducted briefings on March 11, 2019 for Batangas beneficiaries, on March 19, 2019 for the beneficiaries in Tarlac, and on April 11-12, 2019 for the beneficiaries of Aklan.

Engr. Josue B. Balacuit, Division Chief of the Rural Electrification Administration and Management of the DOE, who participated in the orientation, said "PetroGreen Energy Corporation (PGEC) is the first energy company to organize their power plants' host communities, Distribution Utilities (DUs), and the DOE for a series of briefings on the revised implementation guidelines of ER 1-94. We appreciate PGEC's initiative on this as it helps the DOE in explaining the processes involved and in clarifying issues and concerns."



# AWARDS & RECOGNITION

## MGI

Certificate of Recognition from the Department of Education–Calamba Division for its support and contribution to the Adopt-A-School Program

2018 SHAPES Outstanding Corporate Safety & Health Excellence Award  
2018 SHAPES Outstanding Safety & Health Professional Award

Certificate of Appreciation from MCL's Project Echo : Mission BLUE Initiative

Certificate of Appreciation from Municipality of Sto. Tomas : Mahaguyog Festival 2018

Certificate of Recognition from the Municipality of Sto. Tomas :  
1st Place-Top Donor for Alay Lakad 2018



## PWEI

2018 Top One Taxpayer in the Municipality of Nabas

2019 Top One Outstanding Taxpayer in the Municipality of Nabas

2018 SHAPES Hall of Famer Awards  
2018 SHAPES Outstanding Corporate Safety & Health Excellence Award  
2018 SHAPES Outstanding Safety & Health Professional Award



## PSC

2018 PEZA Outstanding Community Project Award

DepEd Tarlac City Certificate

2018 SHAPES Hall of Famer Awards  
2018 SHAPES Outstanding Corporate Safety & Health Excellence Award  
2018 SHAPES Outstanding Safety & Health Professional Award

Certificate of Appreciation from Parang Elementary School, CAT High School - Main

Plaque of Appreciation from CAT High School - Annex

Certificate of Appreciation from BFP – Tarlac City Fire Station



# UNFOLDING

GREATER  
OPPORTUNITIES

